

## PRESS RELEASE

Exhibitions and Public Programs in FY2022  
21st Museum of Contemporary Art, Kanazawa

2022 ▶ 23

# Transhistorical

Moving into the future by learning from the past and history



The concept for this year's program at the 21st Century Museum of Contemporary Art, Kanazawa is "transhistorical." Where are we now, and where are we going? We propose to answer this question by zooming back into the past to better understand the present and project it into the future. Through art, we are constantly exploring and archiving these rich memories.

The past, as a historical experience, sometimes reappears like a revenant. The exhibition led by Korean contemporary artists Moon and Jeon presents an archaeological view of the present, an inversion of an apocalyptic human future. Another exhibition showcasing Japanese armor "Kacchu" represents a dialogue between Japanese tradition and the present. Collaborating with contemporary artists, it will feature an updated presentation of Kacchu, a symbol of the samurai born of consummate craftsmanship from the Azuchi-Momoyama through Edo periods. The exhibition promises to be a unique and a creative experiment that takes place in Kanazawa, a city of rich historical traditions.

Turning our attention to contemporary society, which is being changed by pandemics and disasters, isn't it similar to the postwar situation when everything was exhausted and a new worldview was sought out? In the 1950s and 1960s, contemporary artists searched for what they could create out of "nothing." We will exhibit the immaterial creations of the French artist Yves Klein, his contemporaries and young post-internet artists influenced by Klein.

In terms of the museum collection, first on the schedule is a joint exhibition showing contemporary craft works common to both the National Crafts Museum and our museum. Following this will be an exhibition focusing on craft as a tradition that is being renewed by new technology. The last one traces the cultural and natural diversity and historical exchanges that have been cultivated on the islands that connect the oceans in Asia.

The Aperto series, which introduces young artists in the form of solo exhibitions, will be held under the theme of ecology, seeking to engage with one's surroundings to incorporate and revitalize them. One exhibition will focus on the notion of ecological coexistence between humans and living creatures, while the other will be a street art project that takes place in the city.

Lastly, our public program is a diverse and comprehensive lineup that nurtures the seeds of a vibrant creativity.

Yuko Hasegawa  
Director, 21st Century Museum of Contemporary Art, Kanazawa

Public Relations Office: SAITO Chie, ISHIKAWA Satoko, OCHIAI Hiroaki  
1-2-1 Hirosaka, Kanazawa, Ishikawa Prefecture, Japan 920-8509  
Tel: +81-(0)76-220-2814 Fax: +81-(0)76-220-2802 E-mail: [press@kanazawa21.jp](mailto:press@kanazawa21.jp)

This information is current as of March 2022.  
Exhibition and event names and dates are subject to change.  
Please contact us directly for the latest information.

## 21st Century Museum of Contemporary Art, Kanazawa

## Artists' Practices Across History

The two special exhibitions will focus on the efforts of Moon Kyungwon and Jeon Joonho, who have consistently explored the social functions and roles of art in the contemporary era while straddling various domains, and Yves Klein, who sought out new forms of humanity and art that emerged from postwar devastation. We will seek out hints as to how we might confront contemporary society from the practices of these artists who weave history from the past to the present, and into the future.

### MOON Kyungwon and JEON Joonho : News from Nowhere

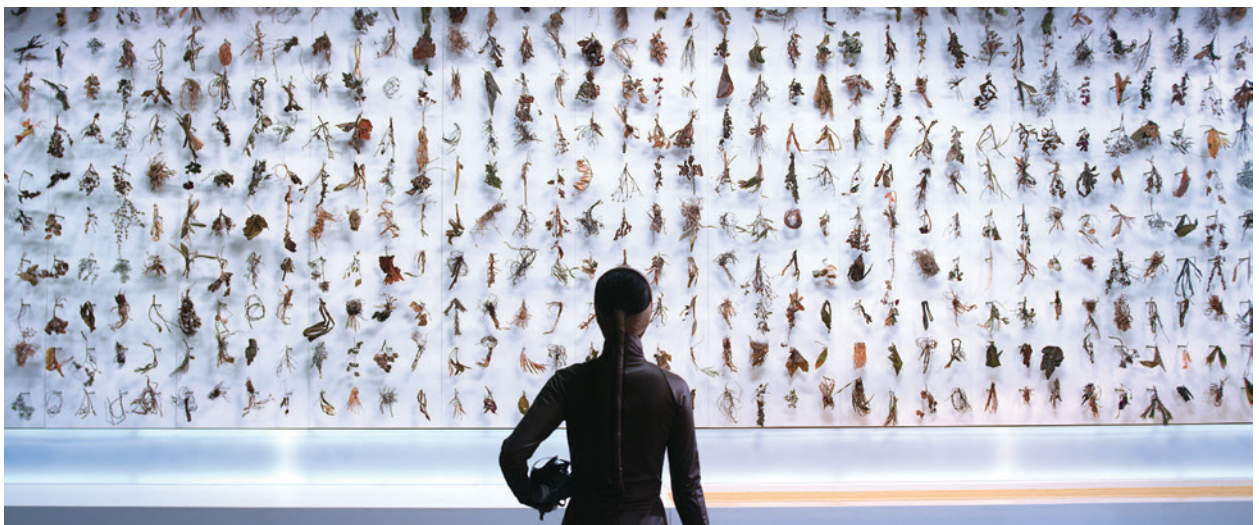
May 3 (Tue/holiday) – September 4 (Sun)



MOON Kyungwon and JEON Joonho

This is the first large-scale solo exhibition in Japan by the leading contemporary Korean artist duo, Moon Kyungwon and Jeon Joonho. Since their formation, Moon and Jeon have explored the social functions and roles of art while advocating for practical platforms for dialogue and collaboration among professionals from various fields. The exhibition will focus on a new video installation depicting the struggle of future humans for survival and freedom in a poetic manner; *News from Nowhere: Freedom Village*, which was exhibited at the National Museum of Contemporary Art, Korea in 2021; as well as *El Fin del Mundo*, a masterpiece that captures the different time frames before and after the apocalypse and their connections in an intricate and elaborate manner.

Also showcased will be works created during their residency in the Kanaiwa area of Kanazawa City that they have been creating since 2018, presenting their thoughts and activities from multiple perspectives through video, drawings, and maquettes. This promises to be an opportunity to fully experience the world of their works, which extracts the issues facing contemporary society and poses powerful messages for us who live in the present to ponder while shuttling back and forth between the future and the past.



MOON Kyungwon & JEON Joonho, *El Fin del Mundo*, 2012  
Collection of 21st Century Museum of Contemporary Art, Kanazawa  
© MOON Kyungwon and JEON Joonho

## The Timeless Imagination of Yves Klein: Uncertainty and the Immateriality

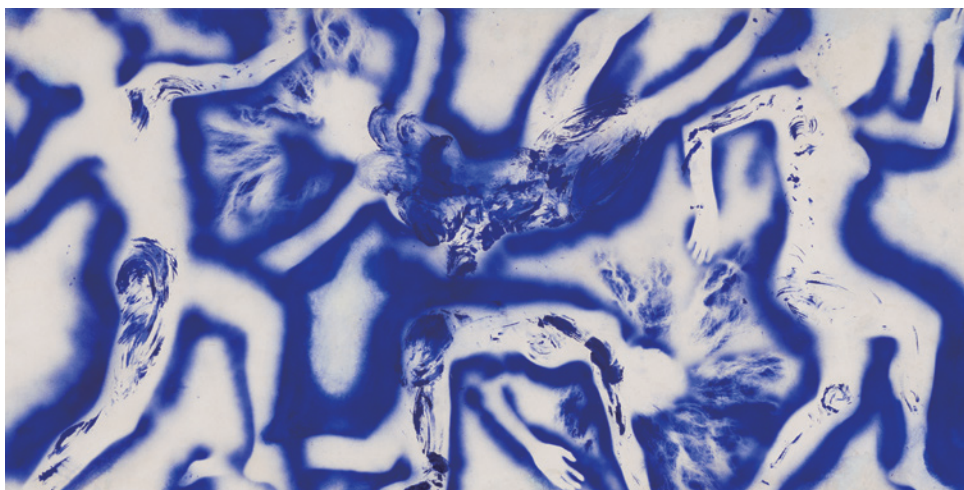
October 1 (Sat) – March 5, 2023 (Sun)



Portrait of Yves Klein made on the occasion of the shooting of Peter Morley  
"The Heartbeat of France," February 1961  
AMF /©bpk / Charles Wilp

This exhibition focuses on French artist Yves Klein, who was active in the 1950s and 1960s, in addition to some of his contemporaries from the Italian Spatialism and Japanese GUTAI movements as well as contemporary artists, highlighting the theme of immateriality that is common to their art. From the *tabula rasa* of the devastated postwar period, Yves Klein emerged comet-like, an artist in search of a new humanity. By thoroughly promoting a dematerialization of art that does not rely solely on materials and supports, Klein had a profound influence not only on his contemporaries, but also later generations of artists.

Today, we are affected by a myriad of "invisible things" such as climate change, viruses, and the confusion created by the information environment of the internet, and are being confronted by many disasters and divisions amidst the uncertainty of not being able to perceive their true nature. The creative explorations into immateriality by Yves Klein and other innovative artists featured in this exhibition promise to provide us with the imagination needed to overcome the uncertainties we face today.



4.  
Yves Klein, *Anthropometry (ANT66)*, 1960,  
water medium on paper on canvas,  
157 × 311 cm,  
Iwaki City Art Museum



5.  
Yves Klein, *Portrait Relief (Martial Raysse)-PR2*, 1962,  
dry blue pigment in synthetic resin on bronze, mounted on primed and gold-leafed board,  
178 × 94 × 33 cm,  
The Hakone Open-Air Museum



## Living Tradition and Innovation in the Space of Contemporary Art

Exhibitions in the first half of the year will explore the universality and innovation of Japanese culture through the fascination of arms and armor vividly revived in an exhibition space that makes ample use of modern technology. The second half of the year will see our first collaboration with the National Crafts Museum. The director of the National Crafts Museum, Masahiro Karasawa, has been invited as a guest curator to introduce the appeal of Japanese *kogei* craft in the modern age. Together with an exhibition of the museum collection under the theme of *kogei*, a fascinating exhibition space that weaves tradition and innovation will be showcased.

### Kacchu Anatomy: The aesthetics of design and engineering

May 3 (Tue/holiday) –  
July 10 (Sun)

- 6. *Fragments of a Continuum*  
(Armor series made from sneaker parts)
- 7. Coat of mail of Niou-do with red thread veil  
Muromachi - Momoyama period  
Collection of Ishikawa Prefectural Museum of History



6|7

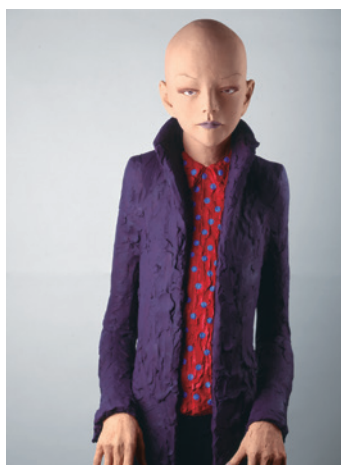
From the Sengoku through Edo periods, Japanese armor “Kacchu” developed and evolved as a symbol of a samurai’s pride and strength in battle in a unique way. This development occurred in terms of both the aesthetic that deployed these craft skills and innovative designs seen in *maki-e* lacquer, metalwork, and braiding, as well as the functionality and engineering of these items as protective gear. These fascinating aspects will be exhibited in a space designed by contemporary artists. Through a video installation by Rhizomatiks, which digitally analyzes the details and structure of these items, and the spatial design by Nile Koetting, which connects armor to the reality of the modern human body in a flexible way, armor “Kacchu” begins to speak to us in the present tense.

A collaborative exhibition of works from  
the collection of the  
21st Century Museum of Contemporary Art, Kanazawa  
and the National Crafts Museum

### Forms of *Hitogata*

July 23 (Sat) –  
September 11, 2023 (Sun)

- 8. Hiroto Kitagawa, *TU07005-Skinhead*, 2007  
Collection of the National Museum of Modern Art, Tokyo  
Photo by Taku Saiki
- 9. Shinkyō Nakamura, *Rome Far Away*, 2018  
Collection of the National Museum of Modern Art, Tokyo  
Photo by S&T PHOTO



8|9

*Hitogata* is a three-dimensional art depicting the human form that has long existed in Japan since ancient times. This figure, which is a rich reflection of its creator’s thoughts and feelings, has been regarded as a “doll” in the field of craft and as a “sculpture” in the domain of fine art. Today, however, a new world is being created through the artistic expression of the human body in a variety of ways that transcend the boundaries of any single field. This exhibition introduces forms of *hitogata* by contemporary artists from the collections of the 21st Century Museum of Contemporary Art, Kanazawa and the National Crafts Museum, and explores their newness.

With the support of the National Crafts Museum

## An Expanding Collection

The 21st Century Museum of Contemporary Art, Kanazawa has collected approximately 4000 works of contemporary art since its opening in 2000. In FY2022, the museum will hold a collection exhibition that interprets the geographical and cultural history of East Asia in terms of contemporary artistic expression. The museum will also introduce a new work by Olafur Eliasson that was acquired in FY2021. We hope you will enjoy the rich variety of works from the collection that continue to expand from the past to the present and into the future. A special exhibit by Matthew Barney is also a must-see.



10

\*Some exhibits may be changed during the exhibition period.  
Reference image:  
Yuki Nara Installation view of the "Bone Flower" series  
©Yuki Nara

### Collection Exhibition 1 Vessels

May 21 (Sat) – October 16 (Sun)

\*until September 11 (Sun) for certain exhibits

This exhibition will focus on the theme of *utsuwa* (vessels), drawing mainly on works from the museum's collection. Some vessels function as containers, while others are created based on the premise that they are no longer utilitarian. *Utsuwa* may also refer to the internal organs of a living creature, stimulating the imagination in a way that evokes living memories from nature, and resonates with these organs. By examining *utsuwa* from various angles, this exhibition seeks to provide an opportunity to ponder their meaning and value.



12

All Artworks © Matthew Barney.  
Photo by Ryuichi Maruo.  
Courtesy of Fergus McCaffrey

### Special Exhibition : Matthew Barney

May 21 (Sat) – September 11 (Sun)

within the venue for "Collection Exhibition 1 Vessels"

This exhibition will focus on the theme of the film *Drawing Restraint 9* (2005) by Matthew Barney, who has developed the theme of Japanese culture as represented by the practices of whaling and the tea ceremony using a variety of media including film, sculpture, installation, and photography. Taking the whaling mother ship "Nisshin Maru," which appears in the film *Drawing Restraint 9*, as both a place and a character, the exhibition will feature *Drawing Restraint 9: Cabinet of Nisshin Maru*, a figurative work condensed into Barney's "Character Glass Case" series, along with six photographic works.



11

Isabel and Alfredo AQUILIZAN,  
*Passage: Another Country*, 2014  
collection: 21st Century Museum of Contemporary Art, Kanazawa  
photo: KIOKU Keizo

### Collection Exhibition 2 Sea Lane – Connecting to the Islands

November 3 (Thu/holiday) – March 19 (Sun), 2023

With the theme *Islands Connecting Okinawa and the Sea*, this exhibition focuses on the diversity of the natural and cultural origins of works from the museum's collection, and from the various regions connected by the sea. The sea has long been a "path" that connects islands to each other, helping to transmit influences between regions. This exhibition presents works that focus on the diversity nurtured on these islands, and influences from other regions owing to the historical background and context associated with the ocean.



13

The exploration of the centre of the sun  
© Olafur Eliasson .  
Photo by Jens Ziehe  
Collection of 21st Century Museum of Contemporary Art, Kanazawa

### Special Exhibition : Olafur Eliasson

July 23 (Sat) – September 11 (Sun)

within the venue for "Forms of Hitogata"

*The exploration of the center of the sun* emerges from Olafur Eliasson's interest in ecology and renewable energy. The work consists of a glass-covered polyhedron and a photovoltaic unit (solar panels and storage batteries), immersing the viewer in the world of the work through its glittering polarizing filters. These movements of light, which trace the relationship between the sun and the planets, make up Eliasson's fascinating installation that proposes how a stable and sustainable world through art might be realized.

## Design Gallery: Changing and Transforming the Future through Design x Art x Technology

Focusing on the role that design and technology can play in society to enrich human lives, we have collaborated with artists, creators, and companies at the forefront of their respective industries. Showcased here are cutting-edge initiatives in various fields with a rich sense of creativity, technology, and design, offering hints as to how to spend your daily life in a creative way.



14

JEFF KOONS  
BALLOON DOG(BLUE), 2021  
BERNARDAUD @Jeff Koons



15

Reference image:  
Temporary hoarding art  
museum at Takanawa  
Gateway Fest (2020)

### Jeff Koons x BERNARDAUD

April 9 (Sat) — September 11 (Sun)

Jeff Koons (b.1955, York, PA; lives and works in New York) continues to captivate the world with his unique iconography that combines the themes of American popular culture and celebrity. This exhibition, presented in collaboration with the porcelain brand Bernardaud from Limoges, France, will feature Koons' signature balloon dogs along with other innovative and extremely intricate design work.

### lab.5 HERALBONY

October 1 (Sat) - March 21 (Tue/holiday), 2023

The "experimental welfare unit" HERALBONY respects the unique characteristics of each person as "different colors," proposing new values while delivering them to society in various forms. This time, using the Design Gallery as a base, they will create a place to perceive and think about the accessibility and usability of the museum, where people with physical and mental disabilities can spend a safe and enjoyable time together. Through a six-month program of activities, they seek to connect the people and events that gather and take place there with the local community.

## Exhibition Series "APERTO" featuring young artists in a solo exhibition format

Aperto (Italian for "to open") is a series of exhibitions featuring young artists in a solo exhibition format. Coming from an art museum that exists in the present moment in this world, Aperto focuses on new trends that are emerging today, providing a bridge to future creation through opportunities for exhibiting works of art.



16

©AKI INOMATA  
courtesy of Maho  
Kubota Gallery



17|18

SCAN THE WORLD  
[STAGE:  
COLLECTIVE  
BEHAVIOR], 2018  
photo by TAMAE  
Image from STW,  
2018

### APERTO 16 AKI INOMATA: Acting Shells

April 9 (Sat) — September 11 (Sun)

AKI INOMATA (1983-) focuses on our relationship with living organisms, and has created many works in collaboration with animals. This exhibition focuses on INOMATA's ongoing project *Memory of Currency*, an attempt to create "money fossils" by integrating portraits of contemporary symbols of currencies from various countries into pearl oysters. Centered on this project, this exhibition showcases the behavior of these active "shells," presenting an imagination that straddles past and present.

### APERTO 17 SCAN THE WORLD [NEW GAME]

October 1 (Sat) — March 19 (Sun), 2023

SCAN THE WORLD (STW) is a project to scan the city with a handheld scanner led by two artists, Kenta Ishige (born in Tokyo, 1994) and BIEN (born in Tokyo, 1993). At the same time, STW is also a new and playful street practice. For this exhibition, SCAN THE WORLD will conduct a residency in Kanazawa, proposing a new kind of game that unfolds on the street.



## Public Programs

The 21st Century Museum of Contemporary Art, Kanazawa seeks to realize projects where citizens and others with diverse values and backgrounds can actively participate, and co-create sites for encounters and exchanges that connect people to each other and their local communities through the museum in an organic way.



19

Reference image from FY 2021, view of activity from "Marubi Cinema Paradise! vol. 8: Poisonous Laughter, A Thin Line between Tragedy and Comedy"



20

Reference image *Everyday Life-Sings of Awareness*, TALK SERIES VOL.6 David Sim "Making Cities for People" (October 2017)

### Hirosaka Cinema Club

Club activities will be launched to revisit the appeal of enjoying movies on a big screen with others, and to communicate this appeal to the public. The club seeks to create a place where people of all ages and backgrounds can gather at the museum around the theme of movies, and enjoy films at Theater 21 on the basement floor, where people who might hesitate to go to the cinema can enjoy movies in peace. Club members will think about the selection of films to be screened, the accessibility of venues and films, PR strategies and so on, interacting with each other through film.

### New Lecture Series

5 times a year

A new lecture series featuring experts in the fields of art, technology, history, food, environment, education, fashion, and more will be launched. As scientific and technological advances continue to transform society, while the global environment and social systems deteriorate, there is a pressing need to work together in all kinds of areas. Through lectures and post-lecture opportunities for asking questions and exchanging ideas, we will create learning opportunities to understand the changing world, and make adjustments or updates to our frameworks and attitudes.



21

Gekidan Awai, *Letters*, Kanagawa Arts Theater, Large Studio, 2021 Photo: bozzo



22

View of Condors "Don't Stop Me Now" tour (Hyogo Performing Arts Center, November 2019)

### Open Call Support Projects "&21"

July, October, November, December

The museum invites ambitious artists to apply to carry out performance projects that the museum will support as a co-sponsor. In July, a theatrical performance by Gekidan Awai will be held, in which a story, beautiful stage design, and philosophical speculation on the COVID-19 pandemic will come together on stage. In November, the theater company Ramanoda will perform a play that had been postponed from 2020. In December, a live installation performance by Sangatsu will pose the question, what is music?

21st Century Museum of Contemporary Art, Kanazawa presents

### Dramatic! Bus Tour for High School Students 2022

Spring and fall

This is a special travel project to support high school students in their appreciation of the performing arts at theaters. High school students will be able to participate in this tour for a low fee and see a theatrical performance. In FY2022, we plan to offer two tours in the spring and fall in cooperation with high school theater clubs, to see exciting and distinctive performances outside of the prefecture.

## Public Programs



23

JICHIKU,  
Project in the  
Kanaiwa-Ono  
district for  
FY2018,  
Yukihiro  
Taguchi's  
*lbasho*, "Let's  
make musical  
instruments  
from flotsam!"



24

Kanazawa  
Citizens Free  
Art Day "Open  
Museum 2016"

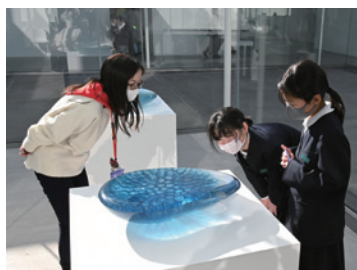
### Artist In Residence in Kanazawa (AIR Kanazawa)

This program invites artists, curators, researchers, and critics from Japan and abroad who are active in the fields of fine art, theater, dance, visual arts, performing arts, and music, as well as related fields such as education, architecture, and urban development, to stay in Kanazawa to create works and conduct research. Through encounters and exchanges between residents with diverse backgrounds and local people, this program seeks to exchange knowledge and opinions and contribute to the fostering of a creative and rich culture.

### Kanazawa Citizens Free Art Day "Open Museum 2022"

November 3 (Thu/holiday)

Held once a year, "Kanazawa Citizens Free Art Day" invites citizens of Kanazawa to view exhibitions organized by the Museum for free. It is a special day when the citizens of the city are able to experience and enjoy art. In preparation for this day, the museum has been working on various activities so that the museum can be a place for the people of the city to be in the same space, and create together. We will continue to hold such activities based on collaboration, co-creation, and exchange, through our programs and volunteer activities such as "Museum For All, and With All," "10 Lessons" and "Marubi Mirai Café."



25

View of Museum Cruise from FY2021  
(venue for Collection Exhibition 2: BLUE)



26

View of workshop from FY2021



27

View of "Hands-on Marubi"

### "Museum Cruise" Program — Inviting Fourth Graders from Kanazawa Schools to the Museum

Spring and fall

This is an appreciation program for 4th grade elementary school students studying in Kanazawa City to encounter, see, feel, and discuss various forms of contemporary art at art museums. The students will view works from the collection exhibition and explore the museum with a "cruise crew" who will assist them in viewing and appreciating the works.

### Marubi Art School

August — January 2023 (tentative)

Workshops will be held jointly by junior high school students, artists, schools, and art museums in Kanazawa City, on themes based on familiar topics. They will examine themselves and society from their own perspectives, think, and express their thoughts, and the results will be made public in the form of an exhibition and collection of documents.

### Kids Studio Program

[Every Sat, Sun, holidays]

Every Sat, Sun, holidays

[Every Tuesday through Friday  
on weekdays]

Weekday program  
"SUKUSUKU Station"

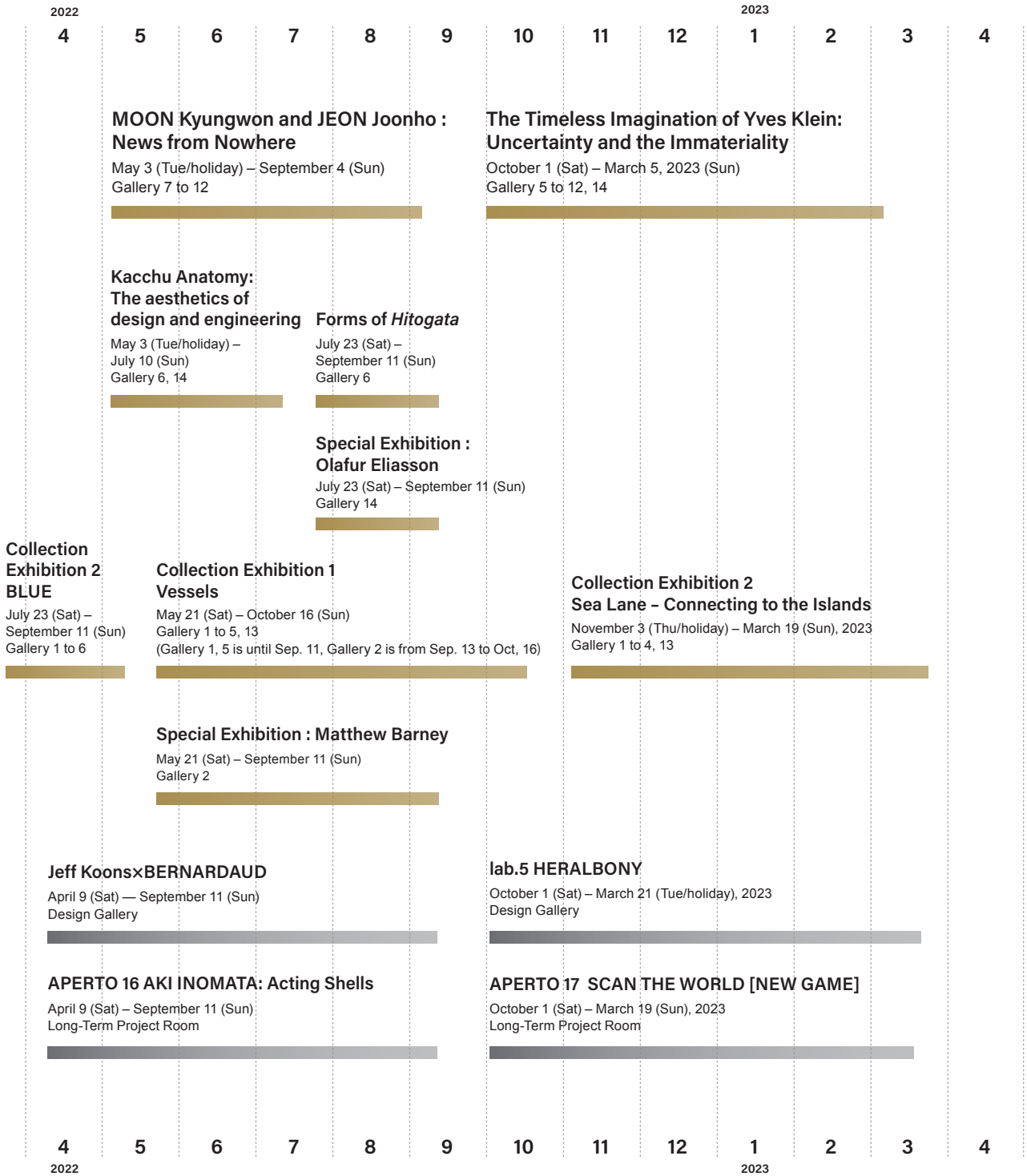
[Odd numbered months  
(Jan, Mar, etc)]

Let's Read Picture Books

At "Hands-on Marubi," children will enjoy modeling activities and viewing artworks. "SUKUSUKU Station" will open as a "childcare plaza" so that you can enjoy the museum on weekdays as a walking route with your young children. In addition, the art library program "Let's Read Picture Books" and various other activities will be held.



# Schedule for Exhibitions



Admission Paid Exhibition  
 Admission Free Exhibition

## Admission

Exhibition	Period	Same-day ticket prices				Online Tickets / Tickets for Groups of 20 or more		
		Adult	University	Elem/JH/HS	65 and over	Adult	University	Elem/JH/HS
<b>MOON Kyungwon and JEON Joonho : News from Nowhere</b>	5.3(Tue/holi) - 9.4(Sun)	¥1,200	¥800	¥400	¥1,000	¥1,000	¥600	¥300
<b>Kacchu Anatomy: The aesthetics of design and engineering *1</b>	5.3(Tue/holi) - 7.10(Sun)	¥750	¥520	¥260	¥600	¥600	¥410	¥200
<b>Forms of <i>Hitogata</i> + Special Exhibition : Olafur Eliasson *1</b>	7.23(sat) - 9.11(Sun)	¥750	¥520	¥260	¥600	¥600	¥410	¥200
<b>The Timeless Imagination of Yves Klein: Uncertainty and the Immateriality</b>	10.1(Sat) - 3.5(Sun)	¥1,400	¥1,000	¥500	¥1,100	¥1,100	¥800	¥400
<b>Collection Exhibition 1 Vessels</b>	5.21(Sat) - 10.16(Sun)	¥450	¥310	Free	¥360	¥360 <sup>*2</sup>	¥240 <sup>*2</sup>	Free <sup>*2</sup>
<b>Special Exhibition : Matthew Barney</b>	5.21(Sat) - 9.11(Sun)							
<b>Collection Exhibition 2 Sea Lane - Connecting to the Islands</b>	11.3(Thu/holi) - 3.19(Sun)	¥450	¥310	Free	¥360	¥360 <sup>*2</sup>	¥240 <sup>*2</sup>	Free <sup>*2</sup>

\*Online tickets can be purchased through the museum's website (start dates for sales differ for each exhibition).

\*Collection exhibitions can be viewed with a ticket for special exhibitions held at the same time (except for the exhibitions listed in \*1 in the table).

\*For \*2 in the table, collection exhibition tickets are not available on the website (same-day ticket sales only).

## Images for Publicity

Images 1–27 are available to the press from the Museum's Public Relations Office (press@kanazawa21.jp) based agreement to the following conditions.

< Conditions of Use >

Photos must be reproduced with the credit and caption given.

Please refrain from cropping. During layout, please avoid laying type (caption or other) over the photo.

Please send proofs to the public relations office to verify information.

Please send a publication (paper), URL, DVD or CD to the museum for our archives, afterwards.