

 **Press Release**

**Yoshitomo Nara**  
**Moonlight**  
**Serenade**

**Sat. September 30, 2006 – Wed. March 21, 2007**

**Voyage of the Moon (Gallery 13) Sat. September 30, 2006 – Wed. March 21, 2007**

**Dog-o-Fama (Long-Term Project) Sat. September 30, 2006 – Wed. March 21, 2007**

**Studio Cafe Yngm:k (Project Room) Fri. November 3, 2006 – Wed. March 21, 2007**

## Yoshitomo Nara: Moonlight Serenade

- **Period:** Sat. September 30, 2006—Wed. (holiday) March 21, 2007  
Voyage of the Moon (room 13)  
Sat. September 30, 2006—Wed. (holiday) March 21, 2007  
Dog-o-rama (Long-Term Project)  
Sat. September 30, 2006—Wed. (holiday) March 21, 2007  
Studio Cafe yngm:k (Project Room)  
Fri. (holiday) November 3, 2006—Wed. (holiday) March 21, 2007
- **Closed:** Monday (Open on October 9, 2006 and January 8, February 12, 2007)  
October 10, December 5 – December 10, Year-end and New Year holidays, January 9, February 13, 2007
- **Opening hours :** 10:00 – 18:00 (20:00 on Fridays and Saturdays)
- **Admission:** Free  
To see “Voyage of the Moon (Room 13),” the admission ticket sold on the day for the special exhibition or the collection exhibition is required.
- **Venue:** 21st Century Museum of Contemporary Art, Kanazawa (Room 13, Long-Term Project, and Project Room)
- **Artists:** Yoshitomo Nara and graf
- **Organizer:** 21st Century Museum of Contemporary Art, Kanazawa
- **Grants from:** Japan Arts Council, Japan Foundation for Regional Art-Activities
- **Sponsor:** Kanazawa Rotary Club
- **Cooperation:** San Arrow, Inc., Stylist Goto, Matsumoto Dismantlement Co., Ltd, Workaholics, Inc.

### Inquiries about this information:

#### **21st Century Museum of Contemporary Art, Kanazawa**

Public relations office (Yuko Eto or Aya Okada)

Tel: +81-(0)76-220-2800

Fax: +81-(0)76-220-2802

1-2-1 Hirosaka, Kanazawa, Ishikawa Prefecture, 920-8509

<http://www.kanazawa21.jp>

E-mail: [press@kanazawa21.jp](mailto:press@kanazawa21.jp)

Note: For inquiries about the photos of the exhibits and the museum, please contact the office given above.



Yoshitomo Nara + graf  
《1/10 Model for *Voyage of the Moon*》  
H40.5×W30×D43 cm  
Collection of the 21st Century Museum of  
Contemporary Art, Kanazawa  
©Yoshitomo Nara + graf

## **Exhibition Introduction**

“Yoshitomo Nara: Moonlight Serenade” is an exhibition of 6-month on-going project, in which Yoshitomo Nara, one of the most internationally acclaimed artists, stays in Kanazawa to create works in collaboration with participants. Through his relationships with people and his on-site production, this exhibition overviews the whole process of Nara’s perception of the world and creativity, bringing the artistic activities such as music and performances along with exhibiting new sculptures and paintings.

Nara has been creating drawings and paintings for many years. The expression of children, a unique and one of the most likable motifs of Nara, had a fierce yet bashful and cool look gazing into the distance. Now, the children painted by Nara have grown together with him and are looking straight at us.

Since 2003, Nara has been exploring his creativity diversely in close collaboration with graf, a creative unit in Osaka. In a house-like structure that graf constructs, the drawings and the paintings by Nara are displayed or pinned to the walls. Such creative collaboration between Nara and graf invites us to a whole new world.

In this exhibition, Nara sets out on a new adventure trip with graf. There he himself plays a role in his narrative with his distinctive motifs such as the moon, children, dogs, and hut-like wooden structures. graf constructs “hut”-like space and also builds “cafe” space, which they actually run. Through these constructs as devices, Nara, graf, visitors, and voluntary staff are mutually connected in this poetic space-time. Thus, Nara’s world, based on this park-like museum, will be flexibly linked to scenes pictured in each one’s mind.

## Exhibition Overview

### ① “Voyage of the Moon”

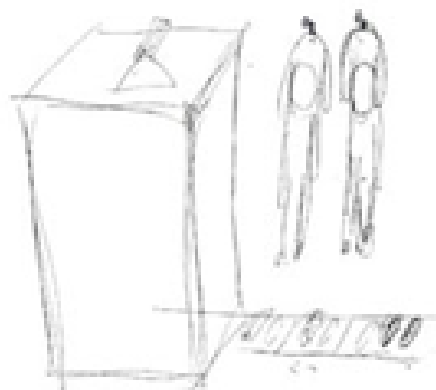
**New installation including the collaboration of Yoshitomo Nara + graf**

Yoshitomo Nara has collaborated with graf since 2003. They have worked together in such a way that graf creates a hut-like space and Nara arranges his paintings and drawings inside. In “**Voyage of the Moon**” newly co-produced by Nara and graf for this exhibition, their work develops further as if it were fused into a piece of sculpture. A deformed house looks like one that appears in a fairy tale, and on the roof is the moon that appears resting for a while quietly gazing into the distance. In this installation emerges an imaginary world impressing us with its unique presence that has never been shown before.

### ② “Pup Up the Dog”

**Extra large stuffed animal production project**

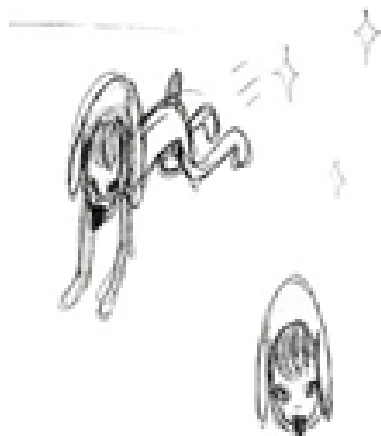
In “**Dog-o-rama**,” Nara’s important motif “dog” develops various scenes one after another. “**Pup Up the Dog**” is one of its projects, and a white dog appears as a stuffed dog with a total length of 7 meters. During the exhibition period, the body part grows larger as the voluntary staff stuff it, and in the end, this extra large dog occupies the whole space.



Yoshitomo Nara  
《Sketch for “Pup Patrol”》  
©2006 Yoshitomo Nara

### ③ “Pup Patrol”

**Dog-costume project in which Nara’s world and the museum space are harmonized**



This is another project of “**Dog-o-rama**.” Schoolchildren in dog costumes designed by Nara make an exploration of the museum. “**Pup Patrol**” shows the diversity of the project through the display of animal costumes, children’s encounter of experiencing the museum and the works on display while wearing costume, and a new dimension created by their tour around the museum.

Yoshitomo Nara  
《Sketch for “Pup Patrol”》  
©2006 Yoshitomo Nara

④“Studio Cafe, yngm:k”

Yoshitomo Nara’s studio & cafe by Yoshitomo Nara + graf

The project room of the 21st Century Museum of Contemporary Art, Kanazawa has turned into a place for Yoshitomo Nara’s residency-production. Nara and graf work together to create a studio and living space using recycled materials. It appears as if a “hut”-shaped rocket hit the project room building. This building becomes Nara’s production space as a studio, and he stays here over a long period of time to create works. “Cafe” is set up adjoining the studio to provide visitors with an opportunity to spend time in a relaxed atmosphere. What is more, Nara’s studio is open to the public on a regular basis, and different events including performances take place simultaneously.



Yoshitomo Nara  
《Sketch for “Studio Cafe yngm:k”》  
©2006 Yoshitomo Nara

## Artist Profiles

### Nara Yoshitomo

---

- 1959 Born in Hirosaki, Aomori Prefecture, Japan  
1987 M.F.A Aichi Prefectural University of Fine Arts and Music  
1993 Meistershuler at Kunstakademie Düsseldorf, Germany  
Currently lives and works in Tochigi Prefecture



photo: Hako Hosokawa

After finishing the master's course at Aichi Prefectural University of Fine Arts and Music, he went to Germany in 1988 to complete the course at Meistershuler at Kunstakademie Dusseldorf. Based in Cologne, he had been working on motifs such as children and dogs in painting, drawing, three-dimensional work, and installation, which have been highly recognized internationally.

In 2000, he moved his base to Tokyo, and held many exhibitions both at home and abroad. Using a wide range of media — picture books, CD jackets, product design, etc., he is expanding the sphere of his activities. In 2003, he collaborated with graf, a creative unit in Osaka, and his activities with awareness of communication with people around him, e.g. volunteers, and his space formation are drawing a great deal of attention.

Sulky-looking children with cool eyes that used to be the feature of his early works have grown as he himself grew. Now they look at us with calm eyes. He starts a project in Kanazawa this fall, and it is expected that he will take a huge leap forward to a new world through his communicating with the local community.

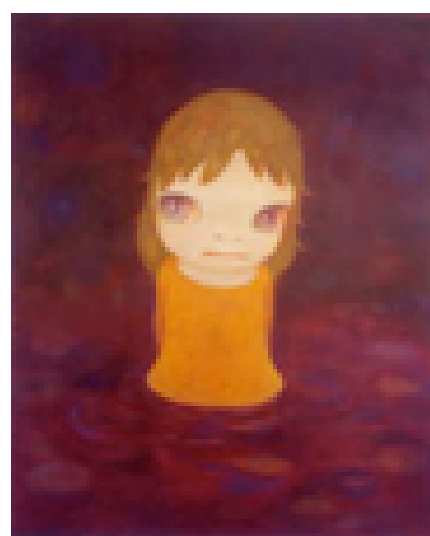
### Reference Pictures



Yoshitomo Nara  
《Voyage of the Moon》 2006  
Color pencil on paper  
©2006 Yoshitomo Nara



Yoshitomo Nara  
《Cosmic Eyes (in the milky lake)》 2006  
Acrylic on canvas  
162.5×130.5 cm  
©2006 Yoshitomo Nara  
courtesy: Stephen Friedman Gallery,  
London



Yoshitomo Nara  
《After the Acid Rain》 2006  
Acrylic on canvas  
227×182 cm  
©2006 Yoshitomo Nara  
courtesy: Stephen Friedman Gallery,  
London

## ■ Selected Solo Exhibitions

- 2000 “Walk On”, Museum of Contemporary Art, Chicago  
“Lullaby Supermarket”, Santa Monica Museum of Art, Santa Monica, U.S.A  
Stephen Friedman Gallery, London, England (also in 2003)
- 2001 “I Don’t Mind If You Forget Me.”, Yokohama Museum of Art, Yokohama, Japan  
(touring to: Ashiya City Museum of Art and History, Ashiya, Japan/ Hiroshima City  
Museum of Contemporary Art, Hiroshima, Japan/ Asahikawa Museum of Modern  
Art, Asahikawa, Hokkaido, Japan/ Yoshii Brick Brew House, Hirosaki, Aomori,  
Japan)
- 2002 “Who Snatched the Babies?”, Centre nationale de l’estampe et de l’œuvre imprimée,  
Chatou, France
- 2003 “Nothing Ever Happens”, Museum of Contemporary Art Cleveland, Cleveland, U.S.A  
(touring to: ICA, University of Pennsylvania, Philadelphia/ San Jose Museum of Art,  
San Jose/ Contemporary Art Museum St. Louis)  
“S. M. L”, graf media gm, Osaka, Japan [with graf]
- 2004 “From the Depth of My Drawer”, Hara Museum of Art, Tokyo, Japan (touring to:  
Kanaz Forest of Creation, Fukui, Japan/ Yonago City museum of Art, Yonago, Tottori,  
Japan/ Yoshii Brick Brew House, Hirosaki, Aomori, Japan/ Rodin Gallery, Seoul)  
[with graf]
- 2006 “YOSHITOMO NARA + graf”, Stephen Friedman Gallery, London, England  
“YOSHITOMO NARA + graf: A to Z”, Yoshii Brick Brew House, Hirosaki, Aomori,  
Japan

## ■ Selected Group Exhibitions

- 2000 “Présumés Innocents”, Musée d’art contemporain, Bordeaux, France  
“The Darker Side of Playland”, Museum of Modern Art, San Francisco, U.S.A
- 2001 “Super Flat”, The MOCA Gallery, Los Angeles, U.S.A. (touring to: Walker Art Center,  
Minneapolis, U.S.A/ Henry Art Gallery, University of Washington, Seattle, U.S.A.)  
“JAM : London – Tokyo”, Barbican Art Gallery, London/ Tokyo Opera City Art Gallery,  
Tokyo, Japan  
“Public Offerings”, Museum of Contemporary Art, Los Angeles, U.S.A.
- 2002 “Drawing Now - Eight Proposition”, Museum of Modern Art, New York, U.S.A.
- 2003 “Trauer/ Grief”, Atelier Augarten, Vienna, Austria
- 2004 “Non-sect Radical”, Yokohama Museum of Art, Yokohama, Japan [with graf]  
“Fiction Love”, Museum of Contemporary Art, Taipei, Taiwan [with graf]  
“Les Enfants Terribles: Il Linguaggio Dell’Infanzia Nell’Arte 1909-2004”, Museo  
Cantonale d’Arte, Lugano, Switzerland
- 2005 “The Elegance of Silence: Contemporary Art from East Asia”, Mori Art Museum,  
Tokyo, Japan [with graf]  
“Little Boy”, Japan Society, New York, U.S.A  
“YOKOHAMA 2005 International Triennale of Contemporary Art”, Yokohama, Japan  
[with graf]
- 2006 “Long Live Sculpture!”, Middelheim Open-Air Sculpture Museum, Middelheim,  
Belgium  
Shanghai Biennale, Shanghai, China

## graf

---

“graf” is a creative unit tackling every possible creation of objects/matters related to lifestyles in terms of “the structure for better living,” ranging from the design of space, furniture, graphics, and products to art and food. They initiated their activities under the name of “decorative mode no.3” in 1993, and opened their showroom “graf” at Nakanoshima, Osaka, in 1998. Not bound by conventional ideas, they deal with designs freely in many fields. The whole of their activities is called “graf,” and at present it has a staff of about thirty people.

The collaboration with Yoshitomo Nara since 2003 is led by the artist Hideki Toyoshima, who is in charge of organizing projects for “graf media gm,” an alternative space managed by graf. For this exhibition, a team including Ryo Aoyagi, Kosei Konishi, and Yuki Takano are working together.



## Related Events

### ★Yoshitomo Nara + Hideki Toyoshima (graf), artist talk

Date/Time: Sat., September 30; 17:00~18:30 (Doors open at 16:30)  
Venue: Lecture Hall, 21st Century Museum of Contemporary Art,  
Kanazawa  
Seating capacity: 80 (application in advance)  
Cost: Free  
Application: Send a reply-postcard with your ① address, ② full name, and  
③ phone number, to the address given below (When the number  
of applicants exceeds the seating capacity, lots will be drawn to  
decide.)  
The office of “Yoshitomo Nara Exhibition, Artist Talk”  
21st Century Museum of Contemporary Art, Kanazawa  
1-2-1 Hirosaka, Kanazawa, Ishikawa Prefecture, 920-8509  
Deadline: No later than September 19, 2006

### ★Studio Cafe yngm:k, opening slide show

Date/Time: Fri. (holiday), November 3; 17:00~19:00 (Doors open at 16:30)  
Venue: Project studio  
Seating capacity: 40 (application in advance)  
Cost: Free  
Application: Send a reply-postcard with your ① address, ② full name, and  
③ phone number, to the address given below (When the number  
of applicants exceeds the seating capacity, lots will be drawn to  
decide.)  
The office of “Yoshitomo Nara Exhibition, artist talk”  
21st Century Museum of Contemporary Art, Kanazawa  
1-2-1 Hirosaka, Kanazawa, Ishikawa Prefecture, 920-8509  
Deadline: No later than October 23, 2006

### ★Pup Patrol (Dog-costume tour for schoolchildren)

Office hours for costume rental: 14:00~16:30  
Participants: Elementary school children  
(They must be accompanied by their parents or guardians.)

Notes:

- The size and number of outfits are limited.
- A group tour for elementary schools is conducted from 10:00 to 12:00.

Application: Elementary schools that are interested in the program  
are required to make an application in advance with the  
information of ① school name, ② date desired, ③  
grades, ④ number of participants, and ⑤ name of  
leader and contact number, via fax no later than a week  
before the date desired. Application will be closed as soon  
as the number of applicants reaches the limit of the  
capacity.

Number of participants: 30 a day

Fax address: To “Pup Patrol Group Tour,” +81-(0)76-220-2806

## ★yngm:k Yoshitomo Nara's Open Studio

Every first and third weekend (Saturday and Sunday) from January 2007  
(On other days, visitors can observe the inside of the studio from the outside in the Project Room.)

### Notes:

Events may be subject to change owing to circumstances.

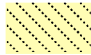
Events other than mentioned above are being planned.

For details of the latest information, please visit the website of the Museum :

<http://www.kanazawa21.jp>

translation: Miki Nishizawa

# Exhibition Map

 Yoshitomo Nara: Moonlight Serenade

