

21st Century Museum of Contemporary Art, Kanazawa

PRESS RELEASE

2014.12.25



ARCHITECTURE FOR DOGS

2014.12.6 (Sat.) -
2015.5.10 (Sun.)

Exhibition Title	ARCHITECTURE FOR DOGS
Planning & Direction	HARA Kenya Co-Founded by Imprint Venture Lab
Period	Saturday December 6, 2014 – Sunday May 10, 2015 10:00 - 18:00 (until 20:00 on Fridays and Saturdays) Closed: Mondays (but open the Monday of January 12), December 29 to January 1, and on January 13 and May 7.
Venue	21st Century Museum of Contemporary Art, Kanazawa (Design Gallery, Long-term Project Room)
Admission	Free
Participating architects	Atelier Bow-Wow, ITO Toyo, MVRDV, KUMA Kengo, Konstantin GRCIC, SEJIMA Kazuyo, Torafu Architects, NAITO Hiroshi, BAN Shigeru, FUJIMOTO Sou, Reiser + Umemoto, Hara Design Institute, and HARA Kenya
Organized by	21st Century Museum of Contemporary Art, Kanazawa (Kanazawa Art Promotion and Development Foundation)
In Cooperation with	Nippon Design Center
Inquiries	21st Century Museum of Contemporary Art, Kanazawa (Tel +81-(0)76-220-2800)

Media Contact 21st Century Museum of Contemporary Art, Kanazawa

Exhibition Curator: TATEMATSU Yumiko
Public Relations Office: OCHIAI Hiroaki
1-2-1 Hirosaka, Kanazawa, Ishikawa Prefecture, Japan 920-8509
Tel: +81-(0)76-220-2814 Fax: +81-(0)76-220-2802
<http://www.kanazawa21.jp> E-mail: press@kanazawa21.jp



About the Exhibition

Organized by designer Kenya Hara, the project ARCHITECTURE FOR DOGS looks freshly at architecture at dog scale with the sincere aim of bringing new possibilities to architecture and happiness to dogs and people.

In November 2012, the project's official website (architecturefordogs.com) was launched and thirteen works of "Architecture for Dogs" by world-leading architects and designers were unveiled together with their assembly drawings, which are available for free download. The website is set up as an interactive social platform where users can upload images of their own works of "Architecture for Dogs" they have constructed based on the downloadable drawings. After the exhibition's opening at Design Miami/ in December 2012, it traveled to Long Beach Museum of Art in Los Angeles, TOTO GALLERY·MA, and ZHI Art Museum in Sichuan. Now, in 2014, it is being held at 21st Century Museum of Contemporary Art, Kanazawa, where 28 projects, 31 works of "Architecture for Dogs" are on display in the museum's Long-Term Project Room, Design Gallery, and Public Zone. Visitors can view architectural works designed for specific dog breeds such as Shiba, Spitz, and Pug and enjoy observing how they reflect the personalities of their designers.

The Design Gallery is exhibiting ten variations (both scale models and actual-size constructions) of Kenya Hara's "D-TUNNEL"—a device that mediates between human scale and dog scale. The "Open Chair," a work selected from among ideas submitted by general visitors during the Tokyo exhibition, is also on display for the first time in Japan.

ARCHITECTURE FOR DOGS—an exhibition of canine theme that promises to broaden the realm of architecture.

Exhibition Concept

ARCHITECTURE FOR DOGS is not about architecture for "animals." The "dog" represents a universal platform because practically everybody living on Earth is familiar with dogs, and many people hold some degree of interest in them. Humans have always built their environments according to their own human scale. The concept of human engineering, for example, is based on a vision for shaping the environment to fit the human body. When I see small dogs standing alongside humans, however, I sense in them new possibilities for architecture. If we were to go beyond human scale in imagining our environment, what would it be like?

After incubating my concept for the project ARCHITECTURE FOR DOGS within me for over a decade, the Internet age arrived and I became interested in setting it up on the web. I feel that by establishing a place where the interests of architecture fans and dog fans intersect on a global scale, the project can be made to develop spontaneously on its own as a new architectural design approach by which a single assembly drawing generates countless replicas across the world. My idea drew the interest of Imprint Venture Lab, a unique American investment company founded by Julia Huang, thanks to whom the project was able to move forward. Renowned architects at the forefront of the global architectural scene also readily agreed to cooperate. To spare no effort in seeking a solution, whatever the problem, is a virtue of the architect's profession. For this project to have influential power, it was essential that experienced architects with established architectural views take part. Their sincere engagement, needless to say, has given the project strong momentum. Architecture for "dogs" may appear like a project of animal lovers, but "dogs" are only a provisional theme. We can put anything we like in the brackets of "Architecture for []," so I will ask you to view the project in this dry, matter-of-fact way.

After its launch in Miami, the project has traveled to Kanazawa by way of China. It excites me to think of the new directions the project might take here, in Kanazawa, with the input of the people who come to see it.

HARA Kenya

About the Artist

KENYA HARA

Born in 1958. Designer, board member of the Nippon Design Center, and professor at Musashino Art University. Hara places importance on "invisible" as well as "visible" design, and is constantly seeking to broaden the horizon and scope of design. He has been the Art Director of MUJI since 2002, and additionally has produced several exhibitions, such as RE DESIGN, HAPTIC.SENSEWARE and HOUSE VISION, which focused on value renovation. His books, *Designing Design* and *White* have been translated into several languages and have been received popularly across the globe.



Related Events

Architecture for [Something]

Date/time: Saturday, December 6, 2014 14:00~16:00

Venue: Lecture Hall, 21st Century Museum of Contemporary Art, Kanazawa

Guest Speakers: Junya Ishigami (architect), Kenya Hara (this exhibition's director)

Admission: Free

Capacity: First 80 arrivals (application necessary)

Applications: Please use our website application form

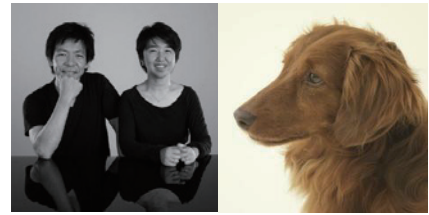
*This event is closed.



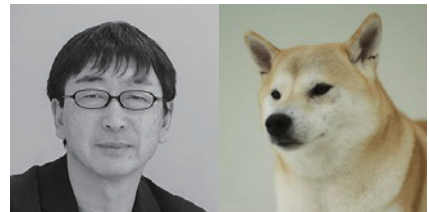
Artist Profile

ATELIER BOW-WOW × DACHSHUND SMOOTH

Atelier Bow-Wow is a Tokyo-based firm founded in 1992 by Yoshiharu Tsukamoto and Momoyo Kaijima. The practice has designed and built houses as well as public and commercial buildings in Tokyo, Europe, and the USA. Its urban research studies led to the experimental project “micro-public-space”, a new concept of public space, which has been exhibited around the world.

**TOYO ITO × SHIBA**

Architect. Born in 1941. Graduating from the University of Tokyo Department of Architecture in 1965. His main works include Sendai Mediatheque, Tama Art University Library (Hachioji campus), etc. He was awarded the Architectural Institute of Japan Prize, Golden Lion at the Venice Biennale, Royal Gold Medal from The Royal Institute of British Architects, The Pritzker Architecture Prize, etc.

**MVRDV × BEAGLE**

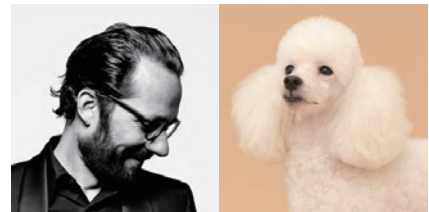
MVRDV was set up in Rotterdam (Netherlands) in 1993 by Winy Maas, Jacob van Rijs, and Nathalie de Vries. In close collaboration, the three principal architect directors produce designs and studies in the fields of architecture, urbanism, and landscape design.

**KENGO KUMA × PUG**

Architect, Professor at the University of Tokyo. Born in 1954. Recent works include FRAC Marseilles, Besançon Art Center, Kabuki Theatre, Nagaoka City Hall, Asakusa Culture and Tourism Center, Nezu Museum, and Suntory Museum. New projects are underway both in Japan and abroad. His latest writings include: Chisana Kenchiku and Kenchikuka, Hashiru.

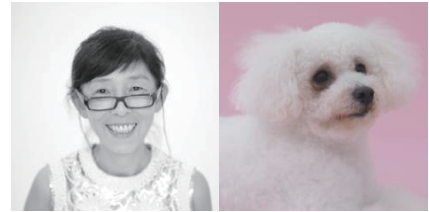
**KONSTANTIN GRČIĆ × TOY POODLE**

Konstantin Grčić, born 1965, was trained as a cabinetmaker at the John Makepeace School for Craftsmen in Wood (Dorset, England) before studying design at the Royal College of Art in London. He established his own office, Konstantin Grčić Industrial Design (KGID) in Munich in 1991. Since then he has developed furniture, products, and lighting for some of the leading companies in the design field.



KAZUYO SEJIMA × BICHON FRISE

Architect. Kazuyo Sejima studied architecture at the Japan Women's University before going to work for Toyo Ito. She launched her own practice in 1987. In 1995, she established SANAA with Ryue Nishizawa. Her own works include, House in a Plum Grove, Inujima Art House Project. SANAA's main works include: the 21st Century Museum of Contemporary Art in Kanazawa, the EPFL Rolex Learning Center, and the Louvre-Lens.

**TORAFU ARCHITECTS × JACK RUSSELL TERRIER**

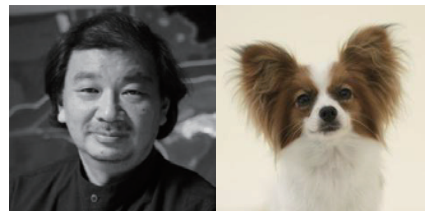
Founded in 2004 by Koichi Suzuno and Shinya Kamuro, Torafu Architects employs a working approach based on architectural thinking. Works by the duo include a diverse range of products from architectural design to interior design for shops, exhibition space design, product design, spatial installations, and film making.

**HIROSHI NAITO × SPITZ**

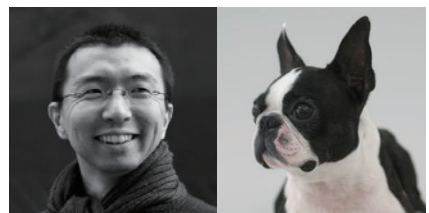
Architect, Professor emeritus, University of Tokyo. Born in 1950 in Kanagawa, Japan. Received M.Arch from Graduate School of Waseda University. After working as chief architect at the architectural office of Fernand Higueras (Madrid, Spain, 1976-1978), and as staff at Kikutake Architects (Tokyo, Japan, 1979-1981), he established Naito Architect&Associates in 1981.

**SHIGERU BAN × PAPILLON**

Architect. Shigeru Ban, who was born in Tokyo in 1957, attended the Southern California Institute of Architecture and graduated from the Cooper Union School of Architecture in 1984. In 1985, he established Shigeru Ban Architects, a private practice in Tokyo. In 1995, He started working as a consultant for the United Nations High Commissioner for Refugees and at the same time established an NGO, Voluntary Architects' Network (VAN). Renowned for his works such as Nicolas G. Hayek Center and Centre Pompidou-Metz, he is today based in his three offices in Tokyo, Paris, and New York.

**SOU FUJIMOTO × BOSTON TERRIER**

Architect. Born in Hokkaido in 1971. After graduating from the University of Tokyo, he established Sou Fujimoto Architects in 2000. "Serpentine Gallery Summer Pavilion 2013" is his latest work. In 2012, the Japan Pavilion in La Biennale di Venezia, in which Fujimoto also participated, was awarded the Golden Lion.



REISER+UMEMOTO × CHIHUAHUA

Reiser + Umemoto RUR Architecture PC is an internationally recognized multidisciplinary architectural design firm that has built projects at a wide range of scales: from furniture, residential, and commercial structures, up to landscape, urban, and infrastructure design. The firm provides a full scope of involvements with the relationship of architecture, structure, and landscape, approaching each project as the continuation of an ongoing inquiry, delving into relationships among architecture, territory, and infrastructure.

**HARA DESIGN INSTITUTE × JAPANESE TERRIER**

The Hara Design Institute, founded in 1991, is a design section within the Nippon Design Center that is supervised by Kenya Hara. Its specialty is communication design. It is involved in multiple projects that delve into the actual issues of the day from the standpoint of design.

**KENYA HARA × TEA CUP POODLE**

* Profile on Page 2

**Related Publication****ARCHITECTURE FOR DOGS**

Project Editor: ARCHITECTURE FOR DOGS, INC.

Planning & Organization: Kenya Hara + HARA DESIGN INSTITUTE, Nippon Design Center, Inc.

Co-Founded by: Imprint Venture Lab

Publication Date: October 24, 2013

Format: Non-standard B5, hardbound, 240 pages (projected)

Publisher: TOTO Publishing (TOTO LTD.) Tel: +81(3)-3402-7138

URL: www.toto.co.jp/publishing

About the Work

Photos of artworks no. 1 to 16 below are available for promotional purpose.
Interested parties should contact the Public Relations Office upon reading the conditions below.
Email: press@kanazawa21.jp

<Conditions of Use>

- *Photos must be reproduced with the credit and caption given.
 - *Please refrain from cropping. During layout, please avoid laying type (caption or other) over the photo.
 - *Please allow the Public Relations Office to verify information at the proof stage.
 - *Please send a proof (paper, URL, DVD or CD) to the museum.
- Thank you for your understanding and cooperation in advance.



Main visual for ARCHITECTURE FOR DOGS
©Hiroshi Yoda



ARCHITECTURE FOR LONG-BODIED-SHORT-LEGGED DOG
Atelier Bow-Wow × Dachshund Smooth
©Hiroshi Yoda



MOBILE HOME for SHIBA Toyo Ito × Shiba
©Hiroshi Yoda



BEAGLE HOUSE INTERACTIVE DOG HOUSE MVRDV × Beagle
©Hiroshi Yoda



MOUNT PUG Kengo Kuma × Pug
©Hiroshi Yoda



PARAMOUNT Konstantin Grcic × Toy Poodle
©Hiroshi Yoda



ARCHITECTURE FOR THE BICHON FRISE
Kazuyo Sejima × Bichon Frise
©Hiroshi Yoda



WANMOCK
TORAFU ARCHITECTS × Jack Russell Terrier
©Hiroshi Yoda



9
DOG COOLER
Hiroshi Naito × Spitz
©Hiroshi Yoda



10
PAPIER PAPILION
Shigeru Ban × Papillon
©Hiroshi Yoda



11
NO DOG, NO LIFE!
Sou Fujimoto × Boston Terrier
©Hiroshi Yoda



12
CHIHUAHUA CLOUD
Reiser + Uemoto × Chihuahua
©Hiroshi Yoda



13
POINTED T
Hara Design Institute × Japanese Terrier
©Hiroshi Yoda



14
D-TUNNEL
Kenya Hara × Tea Cup Poodle
©Hiroshi Yoda



15
Open Chair
Arisa TAKEMATSU + Hara Design Institute
* This concept of design is visualized to a practical use from the visitor's idea of the "Architecture for Dogs" exhibition in Tokyo from October to December, 2013.



16
Open Chair
Arisa TAKEMATSU + Hara Design Institute
* This concept of design is visualized to a practical use from the visitor's idea of the "Architecture for Dogs" exhibition in Tokyo from October to December, 2013.